

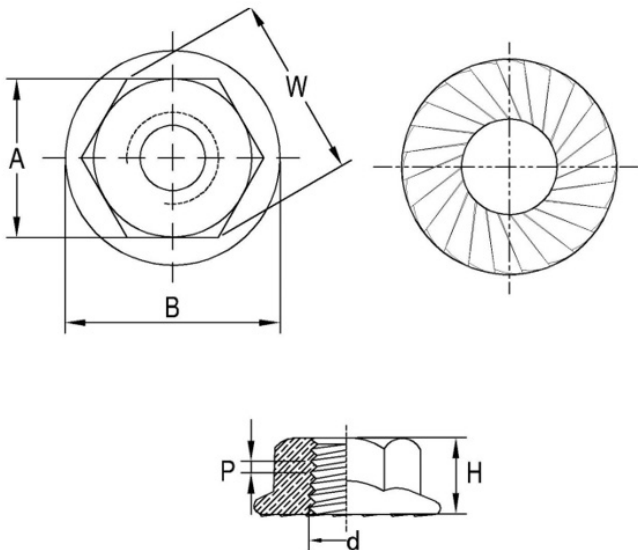
# Flanged Nuts

## Carbon Steel

- **Material:**
- **Application:**

Carbon Steel

These flanged nuts can be used for soft installation materials, assembly lines and within the automotive industry. Its flanged portion on one end allows you to distribute the pressure of the nut without the need to purchase or install washers. Nuts are durable and resistant to corrosion. Its flanged end has teeth that securely latch onto whatever surface it's being installed on. This allows for stronger protection against vibrations and knocks.



Part No.	D (mm)	A opposite side (mm)	B flange diam. (mm)	W min. diagonally (mm)	P thread size (mm)	H hexagonal height (mm)
FN5	M5	7.78-8.00	9.8-11.8	8.79	0.8	4.7-5.0
FN6	M6	9.78-10.00	12.2-14.2	11.05	1.0	5.7-6.0
FN8	M8	12.73-13.00	15.8-17.9	14.38	1.25	7.6-8.0
FN10	M10	14.73-15.00	19.6-21.8	16.64	1.50	9.6-10.0
FN12	M12	17.73-18.00	23.8-26.0	20.03	1.75	11.6-12.0